



# Do Jews really live there? First results from the 2011 census

Daniel Vulkan

Senior Researcher, Board of Deputies of British Jews

Limmud Conference 2012

THE  
JJC

FRATERNITY SOCIETIES — THE NEW CAMPUS HIT P9

CHANUCAH £4  
KIDS LIGHT UP

JONATHAN MILLER  
ALL ABOUT P15  
MY FATHER

THE JEWISH CHRONICLE

14 DECEMBER 2012 ● WWW.THEJJC.COM ● £1.50  
דפּר זכרון ● 1 TEVET 5773 ● NO 7775 ● SINCE 1841

263,346

● *This is how many of us there are in England and Wales — with huge geographic shifts*



13 December 2012 • 29 Kislev 5773 • No 772

**BRITAIN'S BIGGEST JEWISH NEWSPAPER – OVER 30,000 DISTRIBUTED**

Free every week since 1997

# THE CHANGING FACE OF JEWISH BRITAIN

**Census reveals more identifying as Jews, with community booming across Barnet and Herts**



BRITAIN'S ONLY REGIONAL JEWISH NEWSPAPER

# JEWISH *Telegraph*

INCORPORATING JEWISH GAZETTE

MANCHESTER EDITION

■ 263,346 IDENTIFY AS JEWS IN LATEST CENSUS, BUT ...

# Historian says figure is closer to 300,000

FOUNDED 1962

EVERY THURSDAY

No 2146

# Jewish Tribune

JPN Daf Yomi Shabbos 71

THE VOICE OF ANGLO-JEWISH ORTHODOXY

£1.40

13<sup>th</sup> December 2012



5773 ד'תשע"ג

# We are evolving

*2011 Census reveals Anglo-Jewry declining in some areas, but flourishing elsewhere*

המודיעין

# HAMODIA

WEEKLY

THE NEWSPAPER OF TORAH JEWRY

## 2011 Census Figures Show Rise in UK Jewish Population

Report Shows Significant Increases in *Chareidi* Areas

## Responses to religion question, England & Wales, 2011 and 2001

Religion response	2011		2001	
	Number	Percentage	Number	Percentage
Christian	33,243,175	59.3	37,338,486	71.8
Muslim	2,706,066	4.8	1,546,626	3.0
Hindu	816,633	1.5	552,421	1.1
Sikh	423,158	0.8	329,358	0.6
Jewish	263,346	0.5	259,927	0.5
Buddhist	247,743	0.4	144,453	0.3
Other religions	240,530	0.4	150,720	0.3
No religion	14,097,229	25.1	7,709,267	14.8
Religion not stated	4,038,032	7.2	4,010,658	7.7
<b>Total</b>	<b>56,075,912</b>	<b>100.0</b>	<b>52,041,916</b>	<b>100.00</b>

ONS: Tables KS07 (2001), KS209EW (2011)

## 2001

Identified as Jewish:	259,927
Overall non-response rate:	7.7%
Estimated number of Jews, allowing for non-response	
	$= \frac{259,927}{(1-7.7\%)}$
	$= 282,000$

## 2011

Identified as Jewish:	263,346
Overall non-response rate:	7.2%
Estimated number of Jews, allowing for non-response	
	$= \frac{263,346}{(1-7.2\%)}$
	$= 284,000$

**BREAKING NEWS:  
JEWISH  
POPULATION  
UNCHANGED**

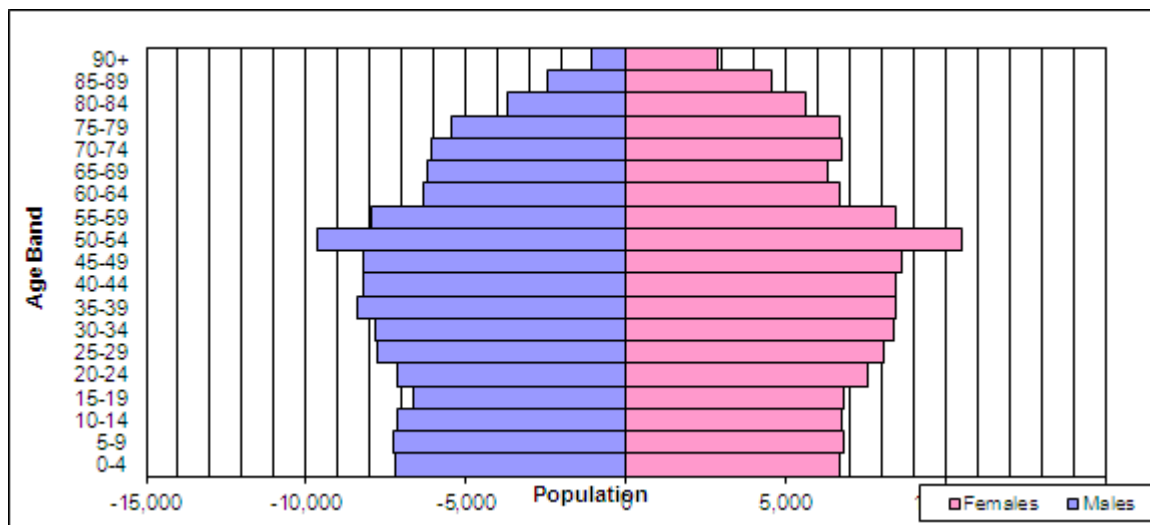


## Local authorities with largest Jewish populations in 2011 – change since 2001

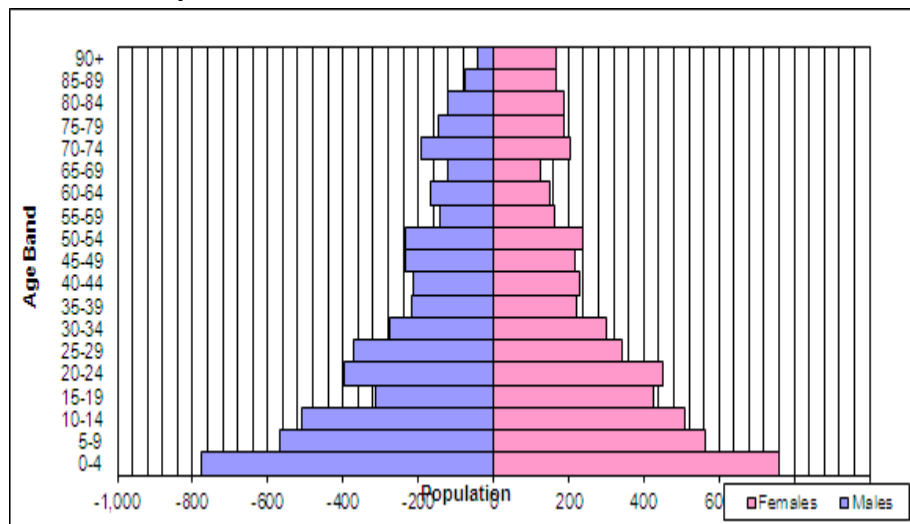
LA	2011				2001			Change 2001-2011	
	Total	Jewish	Percent	Rank	Total	Jewish	Rank	Number	Percent
Barnet	356,386	<b>54,084</b>	15.2%	1	314,564	46,686	1	7,398	15.8%
Hackney	246,270	<b>15,477</b>	6.3%	2	202,825	10,732	5	4,745	44.2%
Hertsmere	100,031	<b>14,293</b>	14.3%	3	94,455	10,712	6	3,581	33.4%
Harrow	239,056	<b>10,538</b>	4.4%	4	206,814	13,112	3	-2,574	-19.6%
Bury	185,060	<b>10,302</b>	5.6%	5	180,607	8,924	7	1,378	15.4%
Redbridge	278,970	<b>10,213</b>	3.7%	6	238,635	14,796	2	-4,583	-31.0%
Camden	220,338	<b>9,823</b>	4.5%	7	198,019	11,153	4	-1,330	-11.9%
Salford	233,933	<b>7,687</b>	3.3%	8	216,104	5,179	13	2,508	48.4%
Haringey	254,926	<b>7,643</b>	3.0%	9	216,507	5,724	11	1,919	33.5%
Westminster	219,396	<b>7,237</b>	3.3%	10	181,286	7,732	9	-495	-6.4%
Leeds	751,485	<b>6,847</b>	0.9%	11	715,402	8,267	8	-1,420	-17.2%
Enfield	312,466	<b>4,412</b>	1.4%	12	273,559	5,336	12	-924	-17.3%
Brent	311,215	<b>4,357</b>	1.4%	13	263,464	6,464	10	-2,107	-32.6%
Epping Forest	124,659	<b>3,972</b>	3.2%	14	120,894	3,715	14	257	6.9%
Kensington and Chelsea	158,649	<b>3,320</b>	2.1%	15	158,920	3,550	15	-230	-6.5%
Gateshead	200,214	<b>3,004</b>	1.5%	16	191,141	1,564	30	1,440	92.1%
Brighton and Hove UA	273,369	<b>2,670</b>	1.0%	17	247,816	3,358	16	-688	-20.5%
Manchester	503,127	<b>2,613</b>	0.5%	18	392,819	3,076	17	-463	-15.1%
Trafford	226,578	<b>2,413</b>	1.1%	19	210,144	2,314	21	99	4.3%
Birmingham	1,073,045	<b>2,205</b>	0.2%	20	977,087	2,343	20	-138	-5.9%

# Population Pyramids – Jewish population, 2001 census

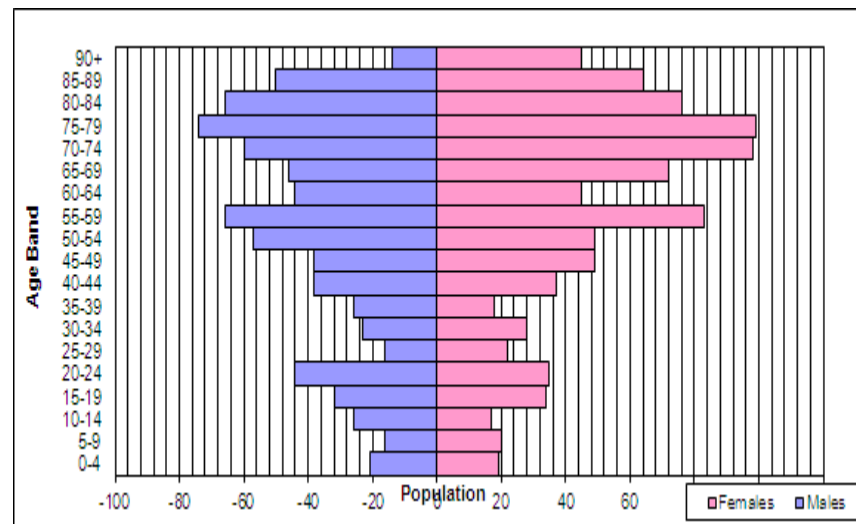
England & Wales



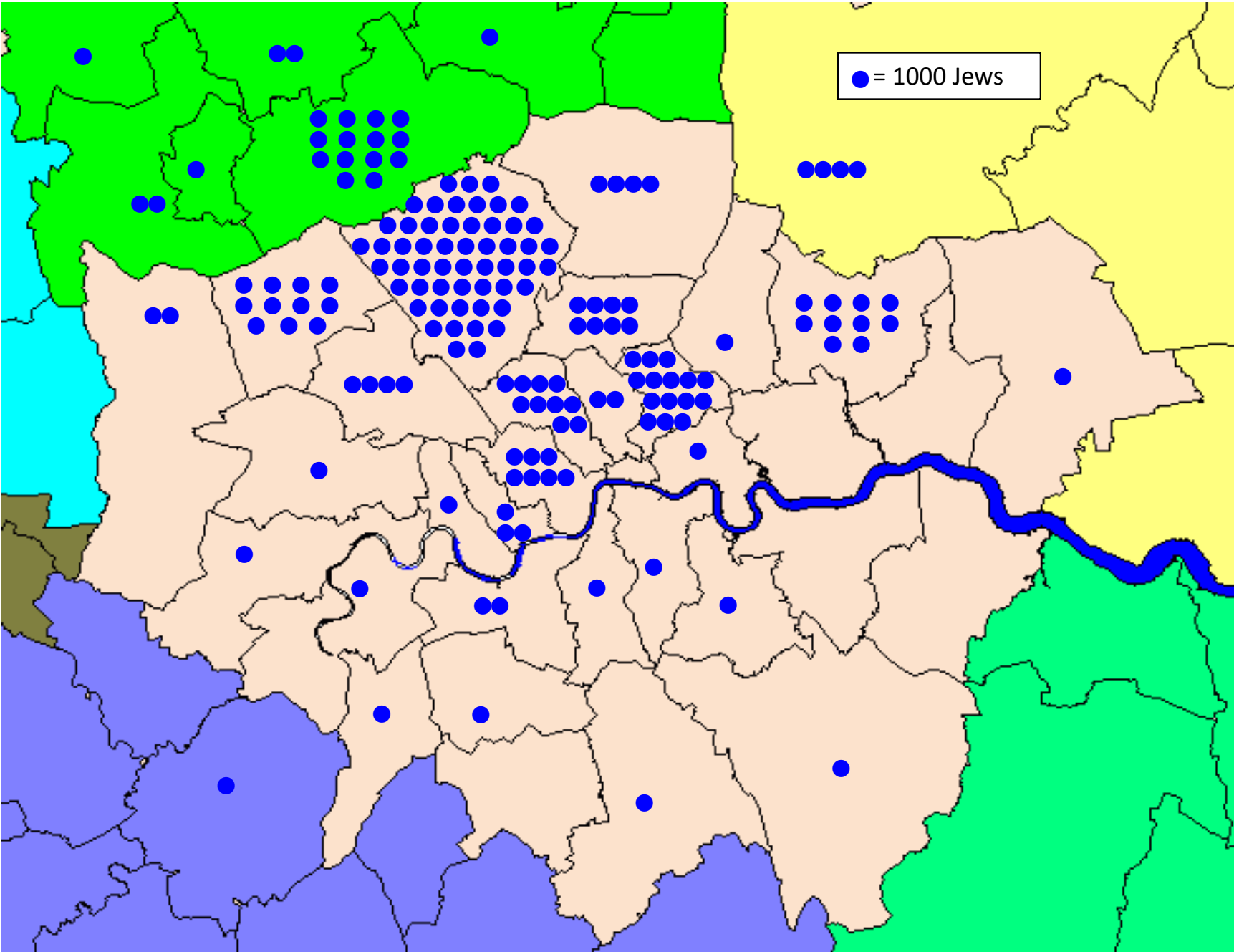
Hackney



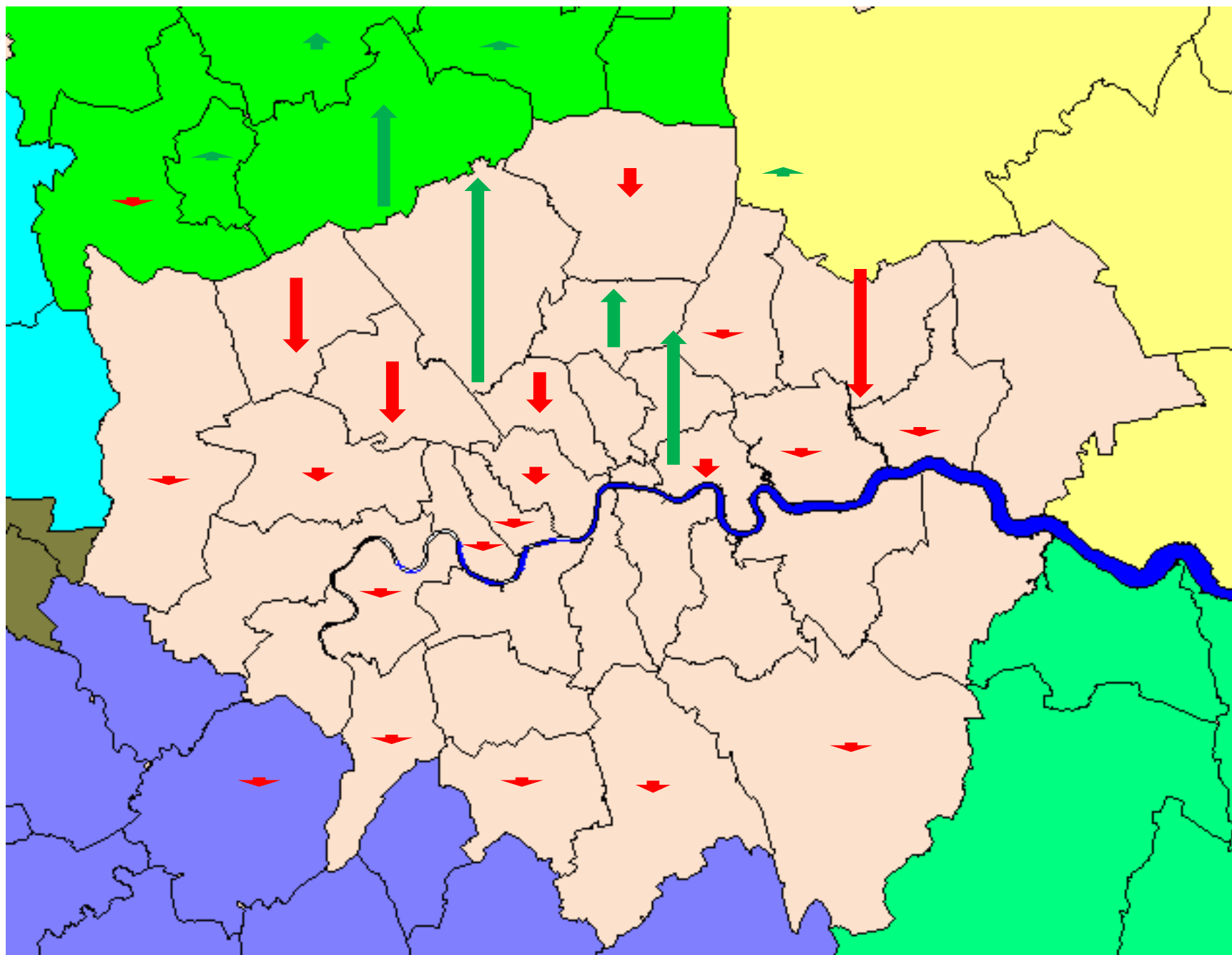
Bournemouth



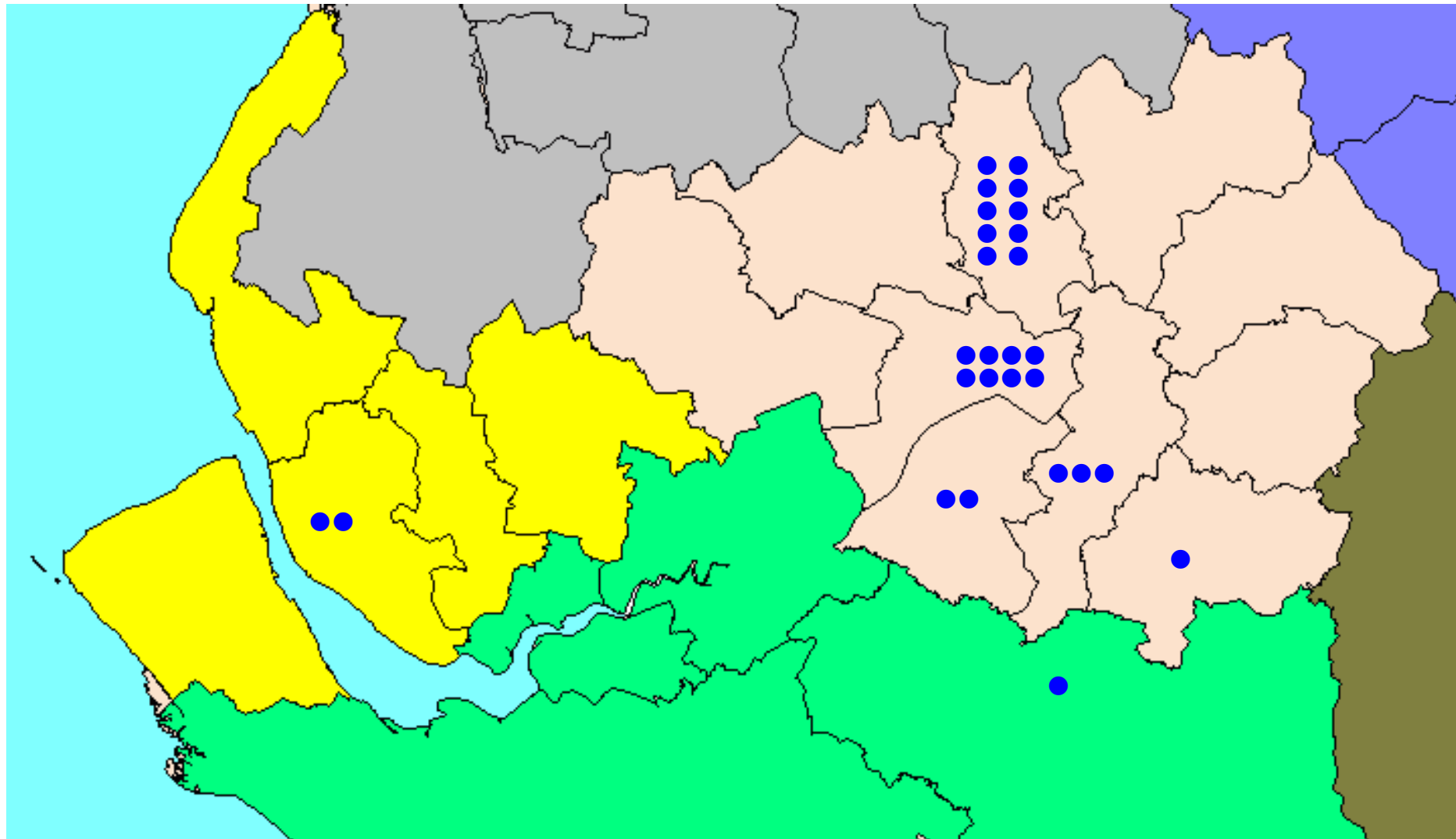
# London and surroundings – recorded Jewish population in 2011



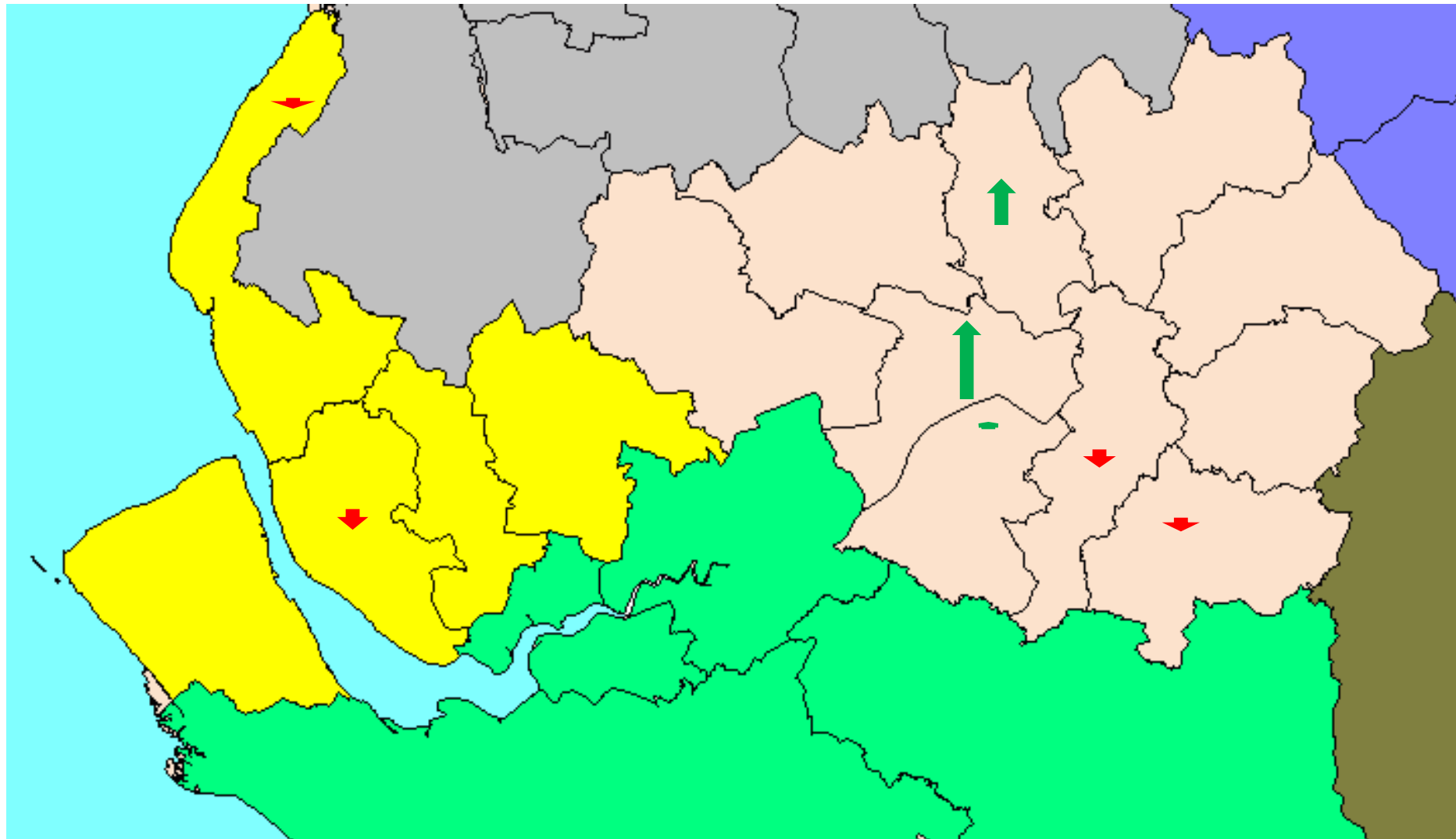
# London and surroundings – change in recorded Jewish population – 2001 to 2011

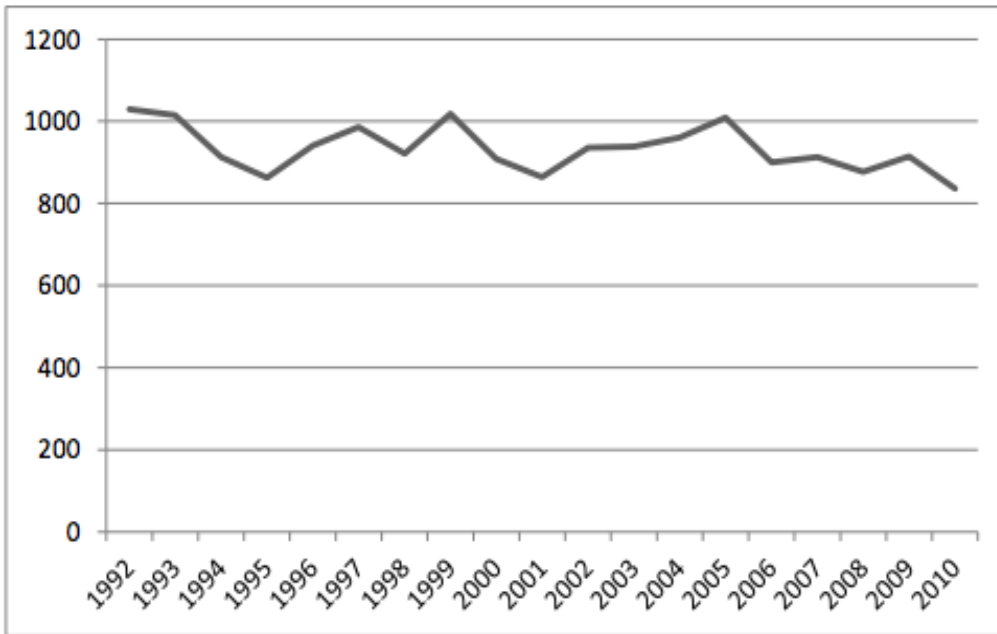


# Manchester and surroundings – recorded Jewish population in 2011



# Manchester and surroundings – change in recorded Jewish population – 2001 to 2011





Total Jewish marriages, United Kingdom, 1992-2010 (Board of Deputies)

Denominational breakdown of Jewish marriages, United Kingdom, 1981-2010 (Board of Deputies)

